



# AS SERIES

4-110 kW

7.6/8.0/8.6/10.0/10.6/12.6/13.0 bar(g)

## Stationary Oil Flooded Screw Air Compressor



# ABOUT SULLAIR

*Since 1965, Sullair has been leading innovation in the field of screw compression and vacuum technology. With more than 50 years of experience, we have made a new round of innovation in this field. Sullair adopts the most advanced technology, equipment and production processes to provide customers with the best air compressors and vacuum equipment to meet the most demanding requirements of customers. Sullair has a first-class screw rotor design, which leads the industry trend in this field.*

## **RELIABILITY**

Customers who work with Sullair have found that the intangibles make all the difference — things like trust, confidence and peace of mind. They go to work every day having full faith in their equipment, as well as the knowledge that dedicated distributors and Sullair personnel have their back every step of the way.

## **DURABILITY**

Bulletproof. Built to last. However you spin it, Sullair compressors are in it for the long haul, driven by the design of the legendary Air End. In factories and on jobsites all over the world, you will find Sullair compressors standing the test of time, running consistently today like they did on day one.

## **HIGH PERFORMANCE**

Sullair is constantly innovating to improve the performance of our compressors. For our portable line, this means longer run-time at the jobsite. For our stationary compressors, this means more energy efficiency. With energy costs often far exceeding the upfront cost of a compressor, Sullair is committed to helping you manage your operating expenses — for as long as they run!



# SULLAIR AS SERIES STATIONARY OIL FLOODED SCREW AIR COMPRESSOR

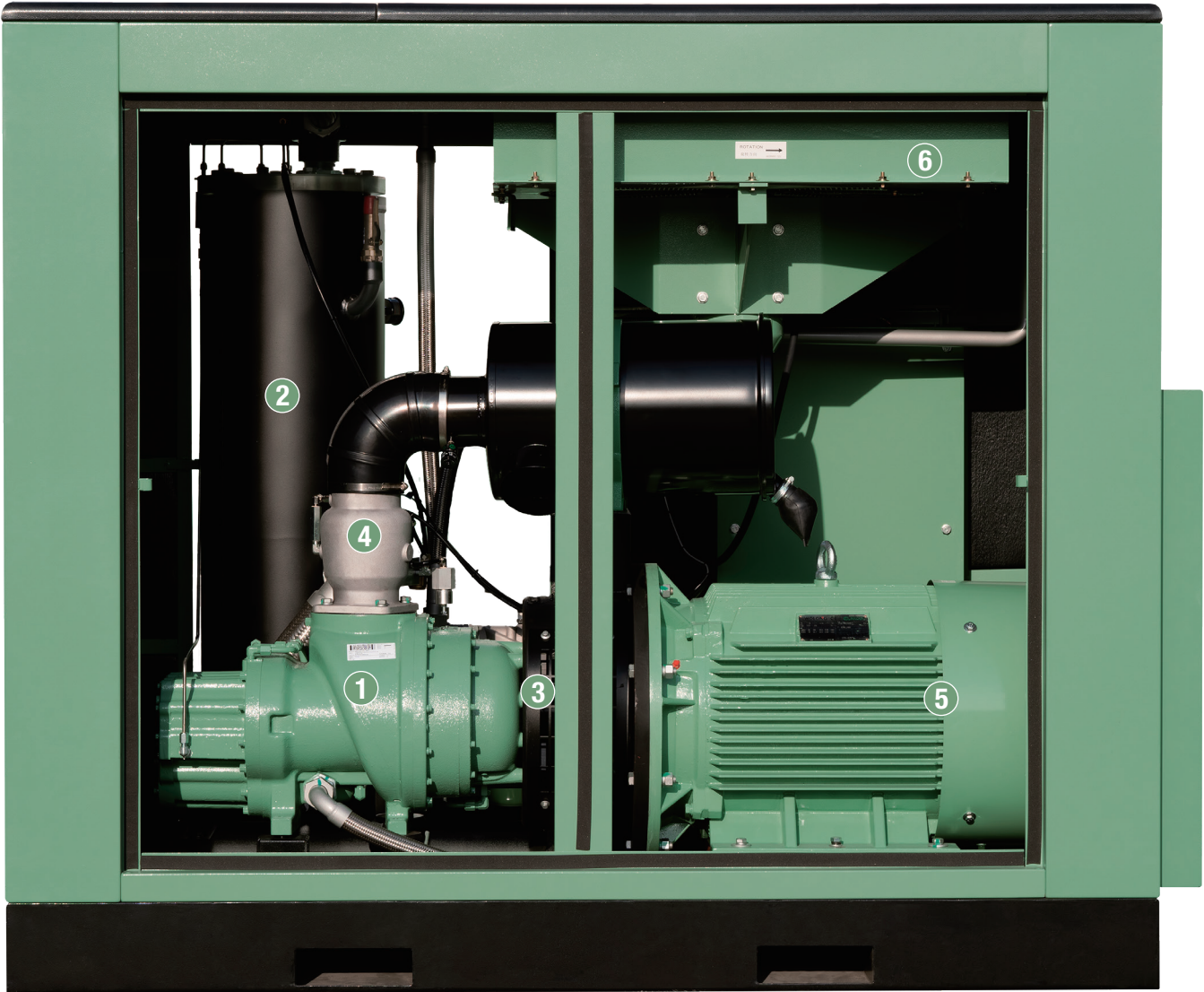
Range: 4-110 kW

Pressure range: 7.6 - 13 bar (110 - 188.5 psig)

## Features and Benefits

- High quality rotor screw assembly.
- Patented rotor design, ensure the Air End longer life.
- Match compressor output with demand 0-100%.
- High efficiency motor.
- Bearing with design life of 100,000 hours.
- Modular design improves reliability for inlet modulation system.

# KEY PRODUCT FEATURES AND INDICATORS THAT BRING YOU BETTER PERFORMANCE



## **1. Air End**

- Sullair patented Air End designed, engineered and manufactured in the USA.
- Large rotor, low speed design, low noise, high reliability and durability.
- Air End is mounted on rubber isolator.
- Proven reliable bearing design to extend bearing life ( up to 100,000 hours) and reduce on maintenance cost.

## **2. Fluid/Air Separation System**

- Large capacity tank for better separation.
- Two-stage separator elements ( only available from AS45-AS110kw) with oil carry over reduce to 1 ppm.
- Low pressure drop provide saving additional 1% power consumption.

## **3. Flexible Coupling**

- Reduce impulsive load, high efficient transmission and reliable operations.
- Ease of maintenance.

## **4. Inlet Regulating Valve**

- Reduce the load and unload cycle time, which will reduce the operating cost.
- Decrease the loading and unloading shock, extend the service life of machine.

## **5. High Efficiency Motor**

- IP55 IE2 Class motor.
- High quality bearing for longer life span.

## **6. Cooling System**

- Larger cooler for fast heat dissipation by 30% than normal.
- With high efficiency of heat dissipation reduce operational cost.

## **Filtration System**

- High quality material, 99.9% efficiency per ISO5011.
- Longer filter life time.

## **Controller**

- LCD screen with easy access.
- Real time display - temperature/ pressure/ other parameters including warning alarms.
- Ease to access maintenance and analysis records.

# SULLAIR GENUINE PARTS AND LUBRICANTS AIR TREATMENT AND OTHER VALUE ADDED SERVICE SULLAIR WILL ASSIST IN OPTIMIZING YOUR OPERATION.

With Sullair what you get is more than an Air Compressor. You are also getting the world's leading rotary screw technology and global service. We provide you with quality after sales products and top service.

*If you have any needs, please contact the distributors supporting your region or Sullair after market support team.*



## ENGINEERED FOR PERFORMANCE

### ■ The Sullair Solution

Sullair offers a full line of high-quality fluids, each one formulated for optimal compressor performance.

### ■ Sullube® — Unmatched performance. Exceptional value.

Featuring a 10,000-hour advanced formulation, Genuine Sullube is the standard factory fill for Sullair stationary air compressors.

### ■ SRF II/8000® — High quality. Value priced.

Sullair SRF II/8000® is a highly-refined, long-lasting standard replacement fluid for stationary air compressors.

### ■ SRF 1/4000® — Your 1-year/4,000-hour advantage.

Boasting a high viscosity index, Sullair SRF 1/4000® is the standard replacement fluid for stationary vacuum compressors.

### ■ 24KT® — The fluid that slashes maintenance costs.

Sullair 24KT has no recommended change interval, which means it's a workhorse for machines that run 24/7.

### ■ Pristine FG™ — A longer-life food-grade lubricant.

Sullair Pristine FG™ is a reliable synthetic lubricant that meets requirements for use in food, beverage and pharmaceutical applications.

# PRODUCT INFORMATION AND TECHNICAL PARAMETERS

For more information, please contact Sullair distributors in your area.

## Technical parameters

Standard Compressors													
Model	Motor		Max. working pressure							Weight kg	Unit size L*W*H mm		Discharge Connection
	HP	kW	7.6	8.0	8.6	10.0	10.6	12.6	13.0		without air receiver tank	with air receiver tank	
			Capacity m <sup>3</sup> /min										
<b>AS04</b>	5	4	—	0.58	—	0.46	—	—	0.4	228 (without air receiver tank)	826×546×940	1,210×546×1,460	Rp3/4
<b>AS05</b>	7.5	5.5	—	0.83	—	0.75	—	—	0.6	238 (without air receiver tank)			Rp3/4
<b>AS07</b>	10	7.5	—	1.07	—	0.94	—	—	0.8	248 (without air receiver tank)			Rp3/4
<b>AS11</b>	15	11	—	1.8	—	1.55	—	—	1.21	350 (without air receiver tank)	998×618×1,035	1,460×618×1,642	Rp1
<b>AS15</b>	20	15	—	2.28	—	2.05	—	—	1.7	365 (without air receiver tank)			Rp1
<b>AS18</b>	25	18.5	3.2	—	2.9	—	2.5	2.2	—	580	1,340×740×1,300	Rc1	
<b>AS22</b>	30	22	3.75	—	3.55	—	3.1	2.7	—	650		Rc1	
<b>AS30</b>	40	30	5.1	—	4.75	—	4.1	3.25	—	900	1,600×860×1,440	Rc1-1/2	
<b>AS37</b>	50	37	6.8	—	6.3	—	5.8	5.0	—	1,000		Rc1-1/2	
<b>AS45</b>	60	45	8.5	—	7.8	—	6.9	5.65	—	1,380	2,000×1,200×1,680	Rc2	
<b>AS55</b>	75	55	10.5	—	9.5	—	8.6	7.6	—	1,410		Rc2	
<b>AS75</b>	100	75	13.5	—	12.5	—	11.1	10.2	—	1,520		Rc2	
<b>AS90</b>	125	90	16.9	—	15.5	—	14.2	12.8	—	2,100	2,500×1,400×1,800	Rc2	
<b>AS110</b>	150	110	20.1	—	19.6	—	16.5	14.6	—	2,130		Rc2	

Sullair's VSD Compressors									
Model	Motor		Max. working pressure				Weight kg	Unit size L*W*H mm	Discharge Connection
	HP	kW	7.6 bar	8.6 bar	10.6 bar	12.6 bar			
			Capacity m <sup>3</sup> /min						
<b>AS30 VSD</b>	40	30	—	1.6-4.75	1.4-4.25	1.2-3.7	980	1,950×860×1,440	Rc1-1/2
<b>AS37 VSD</b>	50	37	2.3-6.8	2.1-6.3	1.9-5.8	1.7-5.1	1,080		Rc1-1/2
<b>AS45 VSD</b>	60	45	1.95-8.5	1.92-7.93	1.9-6.9	1.78-5.65	1,480	2,250×1,200×1,690	Rc2
<b>AS55 VSD</b>	75	55	2.52-10.6	2.54-9.85	2.13-8.6	2.09-7.73	1,510		Rc2
<b>AS75 VSD</b>	100	75	3.23-13.5	3.29-12.55	2.79-11.1	—	1,620		Rc2
<b>AS90 VSD</b>	125	90	4.2-16.9	4.0-15.5	3.4-14.2	3.6-12.8	2,300	3,100×1,400×2,300	Rc2
<b>AS110 VSD</b>	150	110	5.5-20.1	5.4-19.6	4.0-16.5	4.0-14.6	2,400		Rc2

- Unit performance parameters and acceptance criteria shall be subject to Appendix C, ISO1217.
- Reference conditions absolute intake pressure 1 bar, air intake temperature 20 Deg C, relative humidity 0%.
- AS04-75 series are air-cooled model and AS90-110 Series include air-cooled model and water cooled model.

**RELIABILITY    DURABILITY    PERFORMANCE**

**SULLAIR ASIA PTE LTD**

Add: 30 Pioneer Crescent, #10-15,  
West Park BizCentral, Singapore 628560

Tel: +65 6305 7442

SEA.enquiry@sullair.com

**SULLAIR.COM**   



All rights reserved. Specifications subject to change without notice.  
The Sullair symbol, Sullair wordmark, Optimalair®, AirLinx®, and Sullube® are registered trademarks of Sullair, LLC.

88024042001